

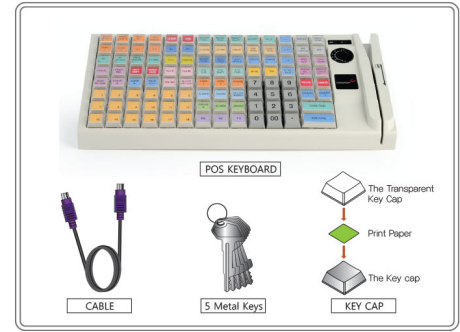
BTC SECU Uni-Mapper 1.1.1.40 (POS KEYBOARD)

btcsecu.co.kr

Table of Contents

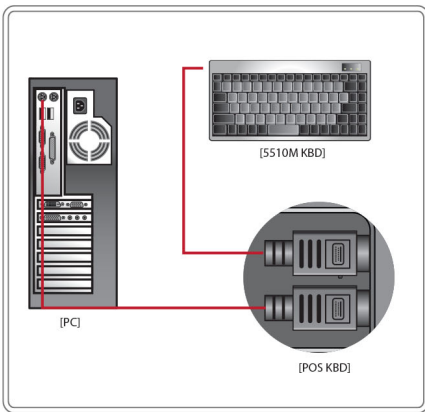
- Accessories ----- (1)
- I/O port Connection --- (2)
- Program Installation --- (3)
- Content of Icon ----- (4)
- KBD Programming ----- (5~8)
- MSR Programming ----- (9)
- Keylock Programming -- (10)
- Product specification --- (11)

ACCESSORIES

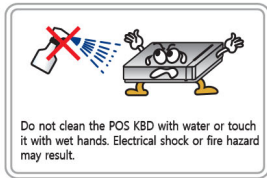
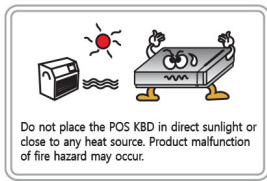


BTC SECU Uni-Mapper 1.0.0.40 (2)

I/O port Connection

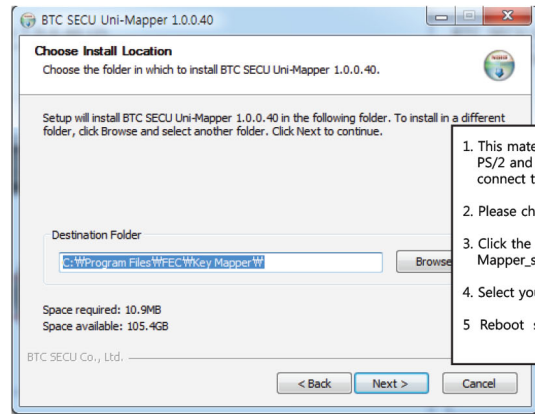


Warning



BTC SECU Uni-Mapper 1.0.0.40 (3)

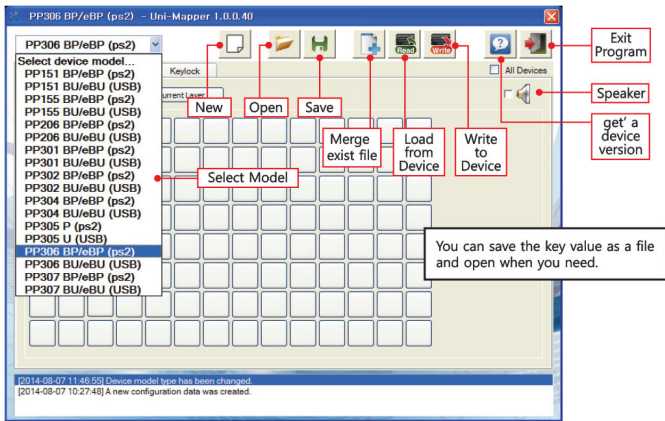
Program Installation



1. This material can be selected both PS/2 and USB interface. Please connect the cable accordingly.
2. Please check the LED light
3. Click the file named installing Mapper_setup.exe
4. Select your language
5. Reboot system is to be installed

BTC SECU Uni-Mapper 1.0.0.40 (4)

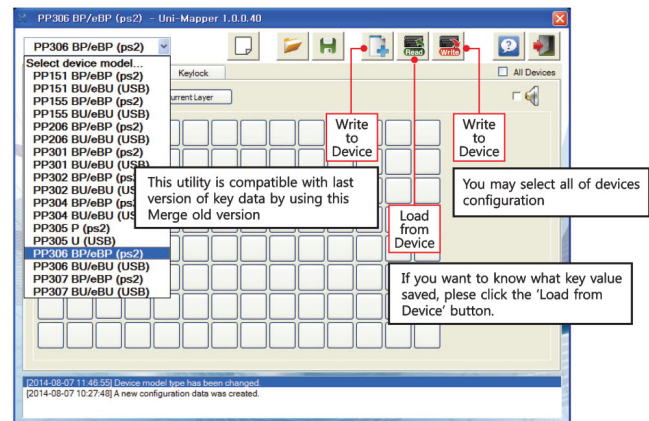
Content of Icon



You can save the key value as a file and open when you need.

BTC SECU Uni-Mapper 1.0.0.40 (5)

Keyboard Programming



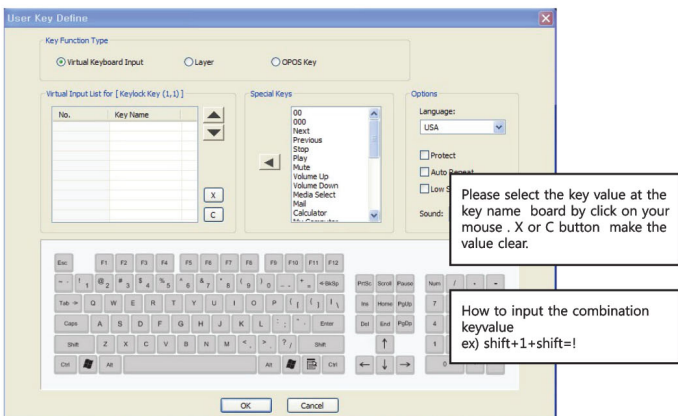
This utility is compatible with last version of key data by using this Merge old version

You may select all of devices configuration

If you want to know what key value saved, please click the 'Load from Device' button.

BTC SECU Uni-Mapper 1.0.0.40 (6)

Keyboard programming

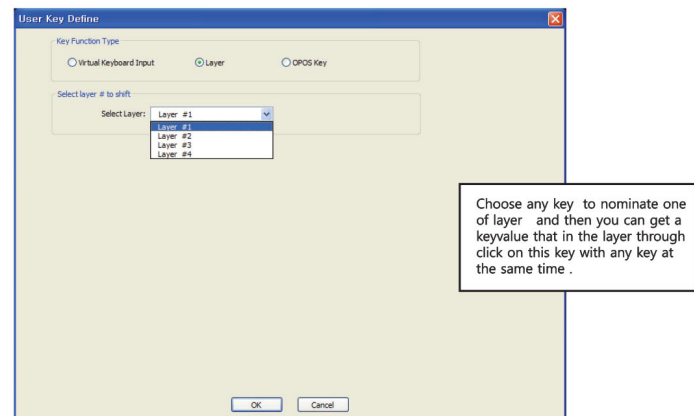


Please select the key value at the key name board by click on your mouse. X or C button make the value clear.

How to input the combination keyvalue
ex) shift+1+shift=!

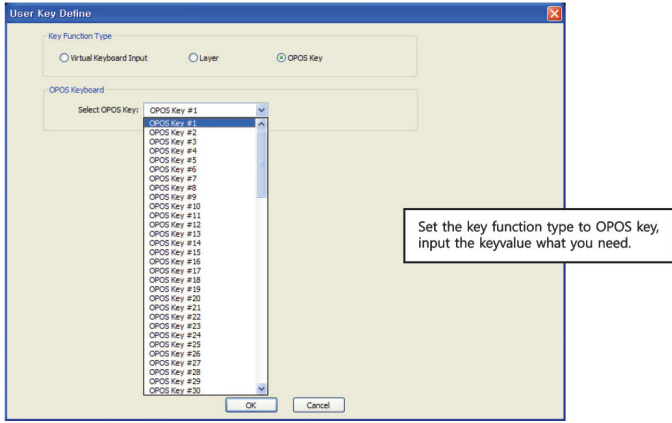
BTC SECU Uni-Mapper 1.0.0.40 (7)

Keyboard programming

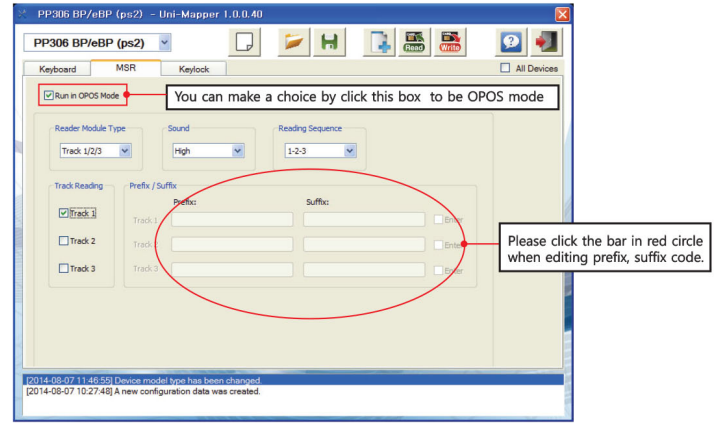


Choose any key to nominate one of layer and then you can get a keyvalue that in the layer through click on this key with any key at the same time.

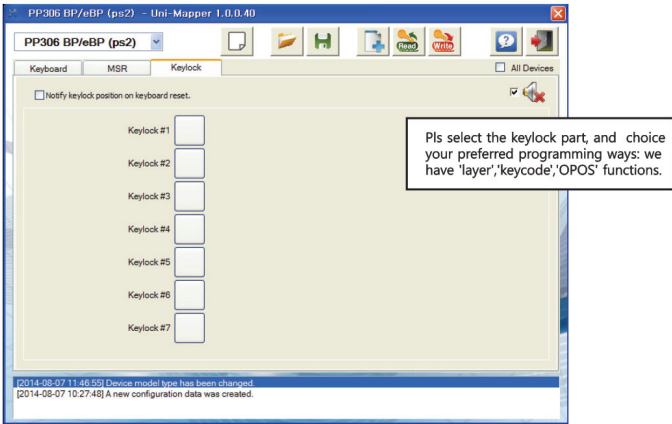
Keyboard programming



MSR Programming



Keylock programming



Product specification

- Optional Keyboard for POS system

1. Programmable key
2. 7 positions Keylock value (only product : PP304, PP306, PP307)
3. Voltage : Max. 250mA
4. Interface option : PS/2 or USB

Technical supporting on the website: www.btcsecu.co.kr